

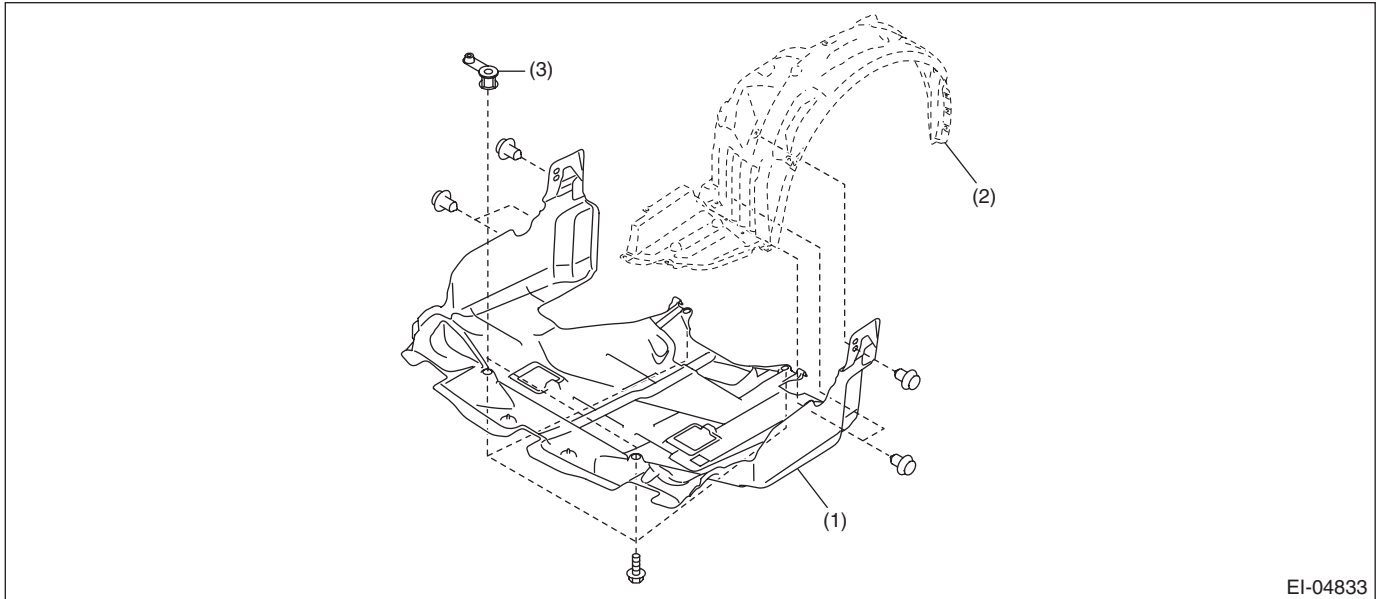
# Front Crossmember Support Plate

## FRONT SUSPENSION

### 4. Front Crossmember Support Plate

#### A: REMOVAL

1) Lift up the vehicle.



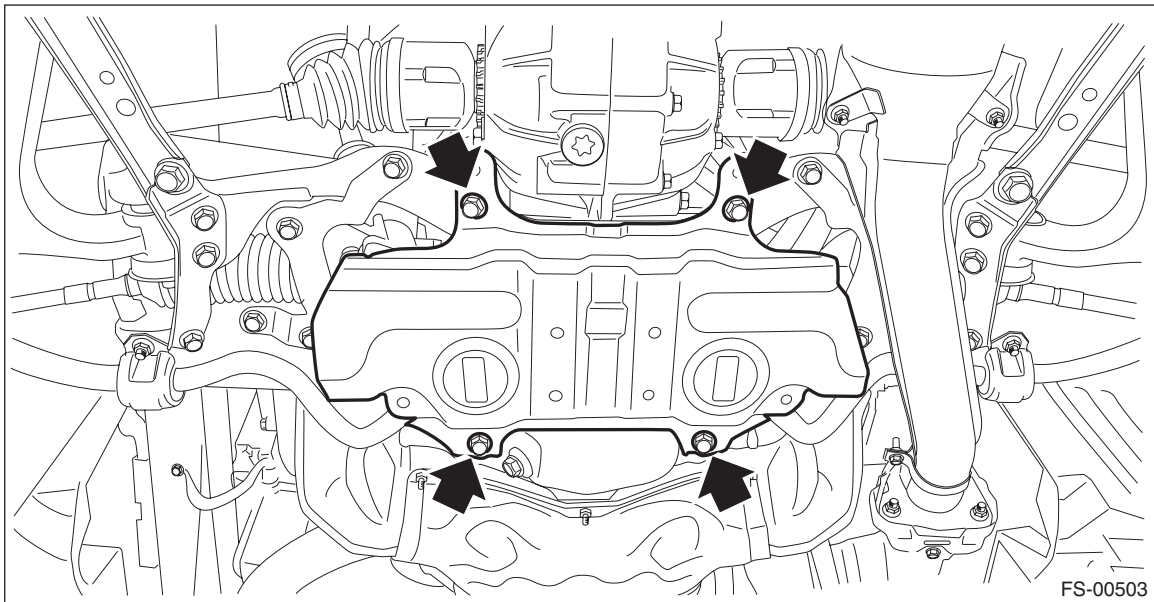
EI-04833

(1) Under cover - front

(2) Mud guard - front

(3) Plate cover - rear (XV model)

2) Remove the bolt, and remove the front crossmember support.

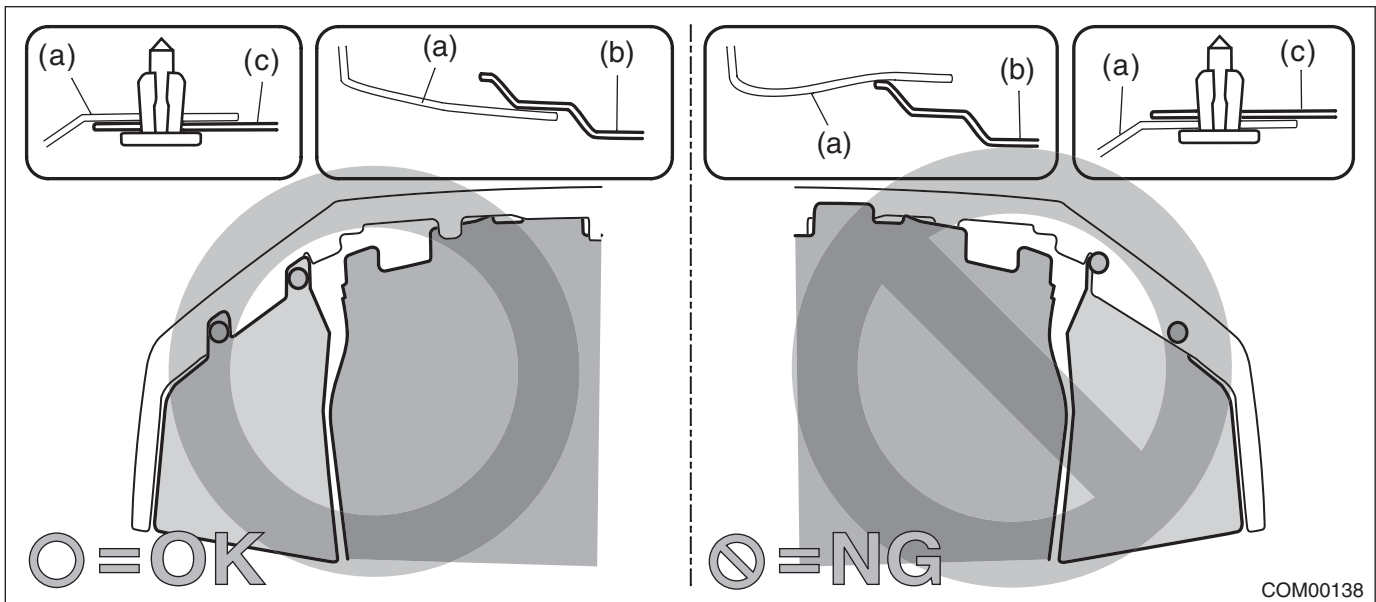


FS-00503

## B: INSTALLATION

### CAUTION:

Install the under cover so that the under cover front end (b) comes inside of the bumper face - front (a).



Install each part in the reverse order of removal.

### Tightening torque:

**Front crossmember support: 60 N·m (6.12 kgf-m, 44.3 ft-lb)**

**Under cover - front: 18 N·m (1.84 kgf-m, 13.3 ft-lb)**